



CASE STUDY – MYSTRO AT A GLOBAL BIOPHARMACEUTICAL COMPANY

BACKGROUND

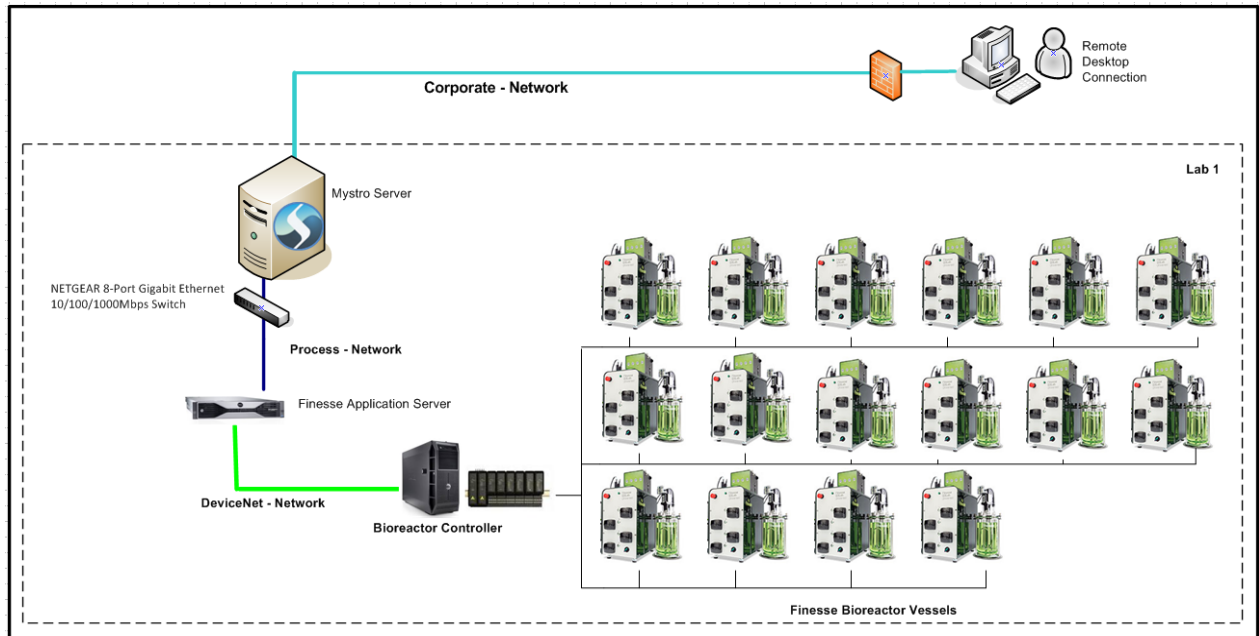
- The customer is a global biopharmaceutical corporation interested in easily viewing all of their bioreactor data in one location.
- This company focuses on products for the treatment of cancer and other severe, immune, inflammatory conditions.

CUSTOMER NEEDS

- The customer currently runs a process development lab utilizing sixteen Finesse bioreactors.
- Their primary goal is to be able to graph all bioreactors on the same plot and to see everything in one central location. They plan to expand to other micro bioreactors as well as various analytical equipment.
- First step was to simply view all bioreactors in a more user friendly format and create reports with a click of a button.
- It is important for the customer to view the data remotely in real-time and compare various batches at a later date.

LABORATORY

- The network layout is shown below. The Mystro server is a physical server which has 2 network cards for access to both the process and corporate network for remote viewing.
- The green network paths represent the instrument's private control connection.
- Once the network was in place, Mystro client applications were installed on one data source node:
 - Finesse Application station



RESULT

- The customer now has the ability to view all of their bioreactor data in one lab location and remotely from their individual offices.
- They can create reports for both live data as well as previous batches with the click of a button.
- For its next step, the customer plans to expand to additional mini-bioreactors as well as some analytical equipment.