



## CASE STUDY – MYSTRO AT A GLOBAL BIOTECHNOLOGY COMPANY

### BACKGROUND

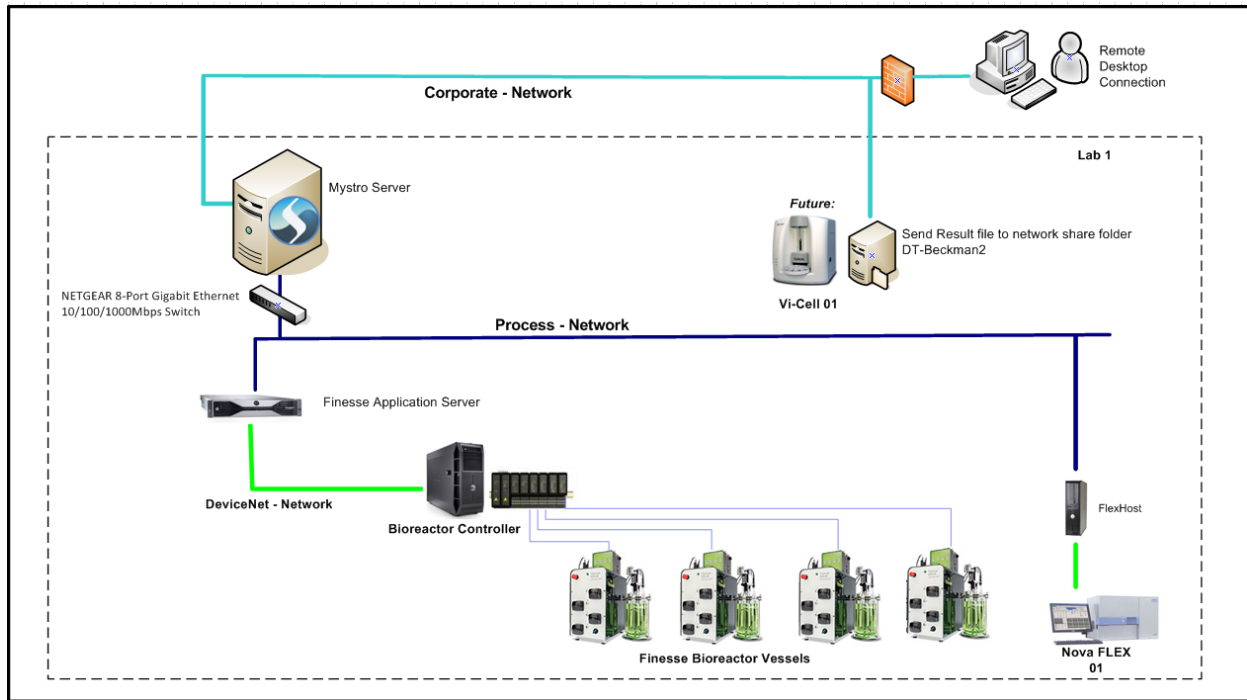
- The customer is a global biotechnology company that wants to bring all their bioreactor data into a central location and synchronize it with an analyzer.
- Located in the United States, they focus on products that treat rare and human genetic diseases.

### CUSTOMER NEEDS

- The customer works on mammalian cell culture in a process development lab and wants to capture all data associated with Finesse Bioreactors and a Nova FLEX 01.
- Their primary interest is to seamlessly capture all data, graph all bioreactor & analyzer data on the same plot, and view everything together in one central location.
- The customer wants to expand the system in the future to add additional analyzers, including a Vi-Cell.

### LABORATORY

- The network layout is shown below. The Mystro server is a physical server which has 2 network cards for access to the process and corporate network for remote viewing.
- The bioreactors and Nova FLEX are on the process network while the Vi-Cell is on the corporate network.
- The green network paths represent the instrument's private control connection.
- Once the network was in place, Mystro client applications were installed on two data source nodes:
  - Finesse Application station
  - FlexHost



## RESULT

- The customer now has the ability to view all of their data in one central location.
- They can network and visually see bioreactors and analyzers together via data and plots for both live trends as well as previous batches.
- The customer looks to add Vi-Cell viability data in the near term based on their experience with their current configuration.